

**Technical Information**

- CV** Check Valves
- SH** Shuttle Valves
- LM** Load/Motor Controls
- FC** Flow Controls
- PC** Pressure Controls
- LE** Logic Elements
- DC** Directional Controls
- MV** Manual Valves
- SV** Solenoid Valves
- PV** Proportional Valves
- CE** Coils & Electronics
- BC** Bore & Cavities
- TD** Technical Data

**General Description**

3-Way Spool Valves. For additional information see Technical Tips on pages SV1-SV6.

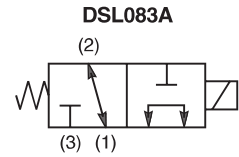


**Features**

- High flow capacity with reduced space requirements
- Standard valve bodies and common cavities
- One piece encapsulated coils with minimal amperage draw
- Manual overrides, seal variations and other options available
- No dynamic seals
- Variety of coil terminations
- Polyurethane "D"-Ring eliminates need for backup rings
- Nylon inserted jam-nut provides secure holding in high vibration applications
- All external parts zinc plated

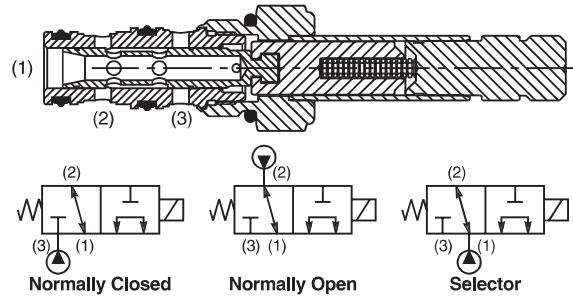
**Specifications**

<b>Rated Flow</b>	<b>DSL083A</b>	N.O.	13.2 LPM (3.5 GPM)
		N.C.	8.4 LPM (2.25 GPM)
		Selector	8.4 LPM (2.25 GPM)
	<b>DSL083B</b>	N.C.	15.0 LPM (4.0 GPM)
		Selector	15.0 LPM (4.0 GPM)
	<b>DSL083C</b>	N.O.	15.0 LPM (4.0 GPM)
	<b>DSL083N</b>	N.O.	12.3 LPM (3.25 GPM)
		Selector	15.0 LPM (4.0 GPM)
	<b>Maximum Inlet Pressure</b>	250 Bar (3600 PSI)	
<b>Leakage at 150 SSU (32 cSt)</b>	120 cc/min. (7.5 in <sup>3</sup> /min.) at 250 Bar (3600 PSI) DSL083B - 180 cc/min. (11 in <sup>3</sup> /min.) DSL083N - 180 cc/min. (11 in <sup>3</sup> /min.)		
<b>Minimum Operating Voltage</b>	85% of rated voltage at 20°C (72°F).		
<b>Response Time</b>	50 ms		
<b>Cartridge Material</b>	All parts steel. All operating parts hardened steel.		
<b>Operating Temp. Range/Seals</b>	-45°C to +93.3°C ("D"-Ring) (-50°F to +200°F) -31.7°C to +121.1°C (Fluorocarbon) (-25°F to +250°F)		
<b>Fluid Compatibility/Viscosity</b>	Mineral-based or synthetic with lubricating properties at viscosities of 45 to 2000 SSU (6 to 420 cSt)		
<b>Filtration</b>	ISO Code 16/13, SAE Class 4 or better		
<b>Approx. Weight</b>	.13 kg (.28 lbs.)		
<b>Cavity</b>	C08-3 (See BC Section for more details)		
<b>Form Tool</b>	Rougher	NFT08-3R	
	Finisher	NFT08-3F	

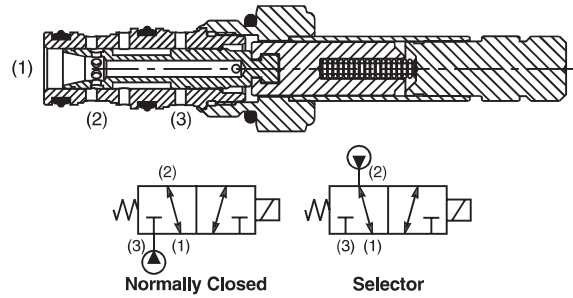


**Construction/Symbols**

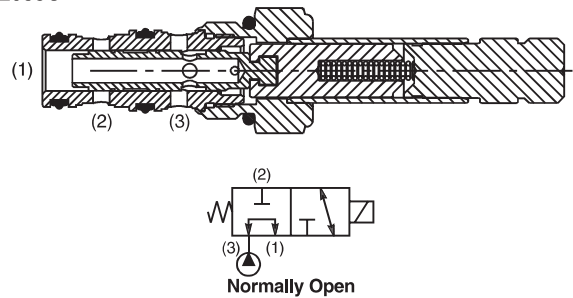
**DSL083A**



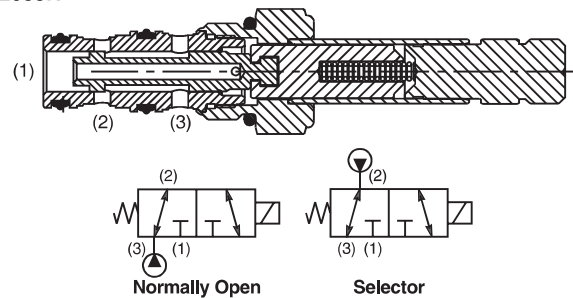
**DSL083B**



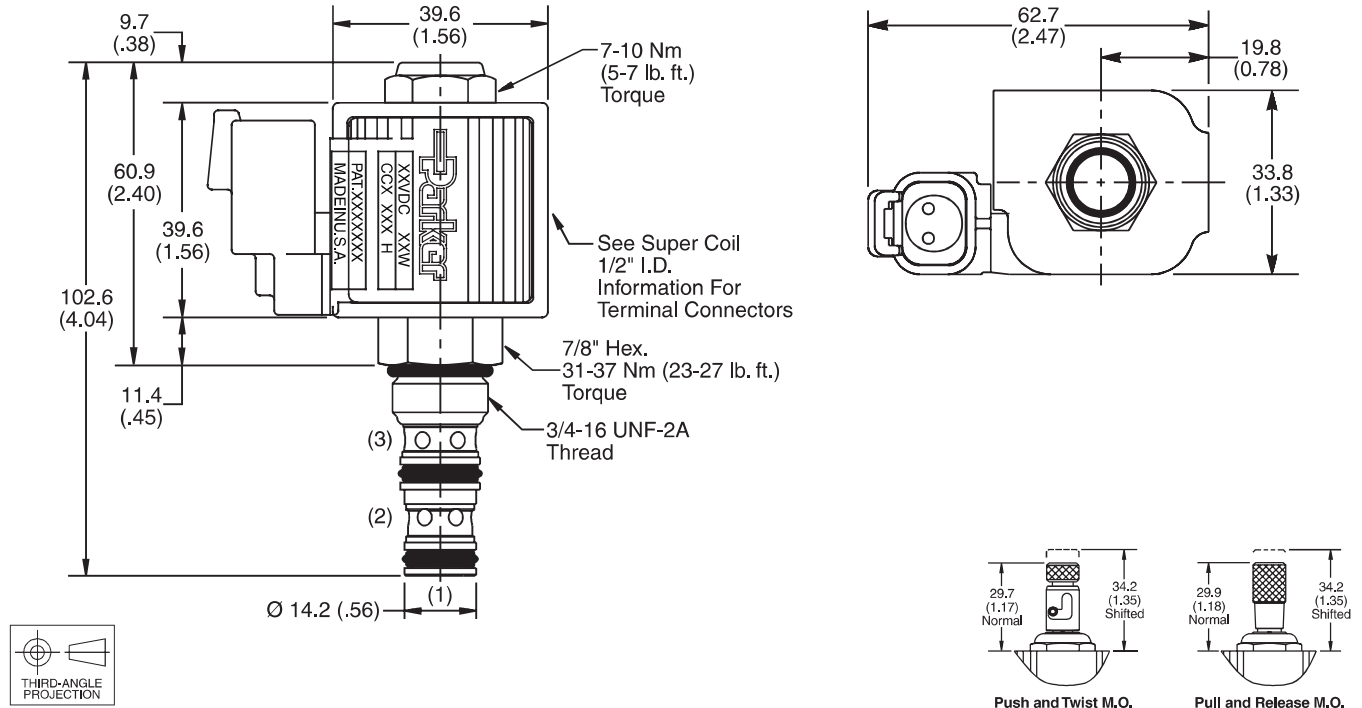
**DSL083C**



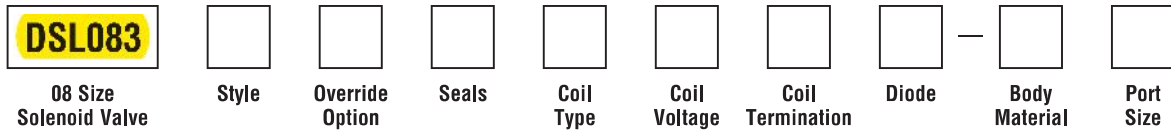
**DSL083N**



**Dimensions** Millimeters (Inches)



**Ordering Information**



Code	Style
A	
B	
C	
N	

Code	Override Options
Omit	None
P	Pull & Release
T	Push & Twist

Code	Seals / Kit No.
Omit	"D"-Ring / (SK08-3)
N	Nitrile / (SK08-3N)
V	Fluorocarbon / (SK08-3V)

Code	Coil Type
Omit	Without Coil
SP*	Super Coil - 19 Watts

\*Recommended

Code	Coil Voltage
Omit	Without Coil
D012	12 VDC
D024	24 VDC
A120	120/110 VAC, 60/50 Hz
A240	240/220 VAC, 60/50 Hz

SP* Coil	Coil Termination
Omit	Without Coil
C	Conduit With Leads
D	DIN Plug Face
A	Amp Jr. Timer†
S	Dual Spade†
L	Dual Lead Wire†
LS	Sealed Lead Wire†
H	Molded Deutsch†

\*Recommended  
 †DC Only

Code	Diode
Omit	None
R	Diode

Code	Body Material
Omit	Steel
A	Aluminum

Code	Port Size	Body Part No.
Omit	Cartridge Only	
4P	1/4" NPTF	(B08-3-*4P)
4T	SAE-4	(B08-3-*4T)
6T	SAE-6	(B08-3-*6T)
6B	3/8" BSPG	(B08-3-*6B)

\* Add "A" for aluminum, omit for steel.